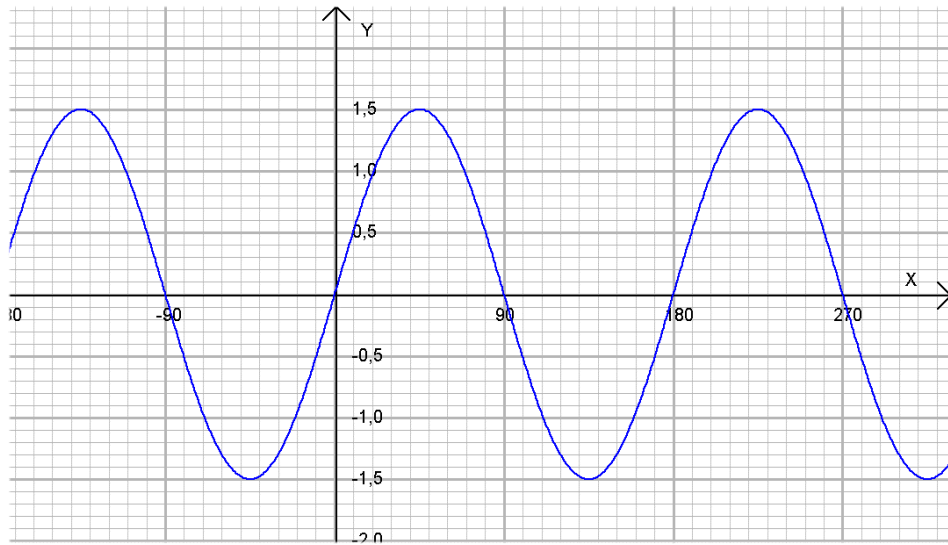
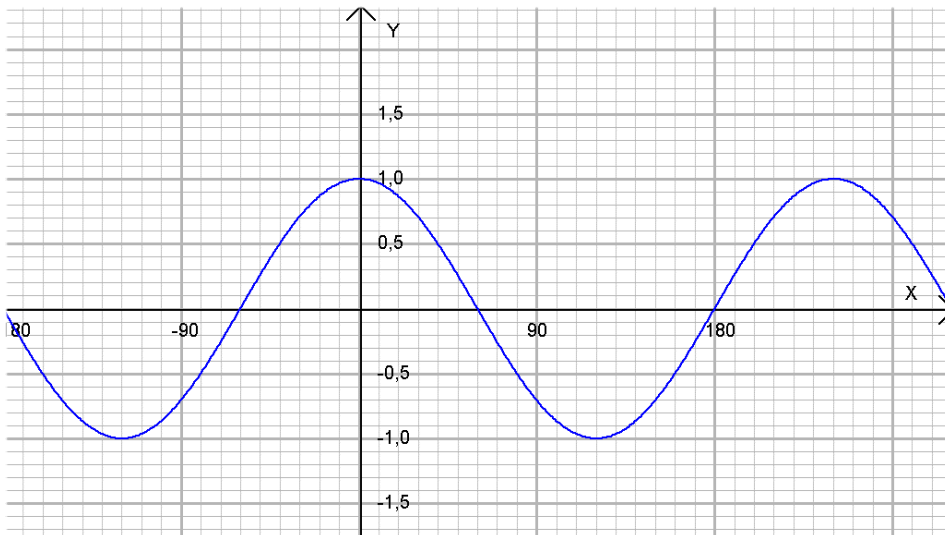


# Några uppgifter om trigonometriska funktionsgrafer

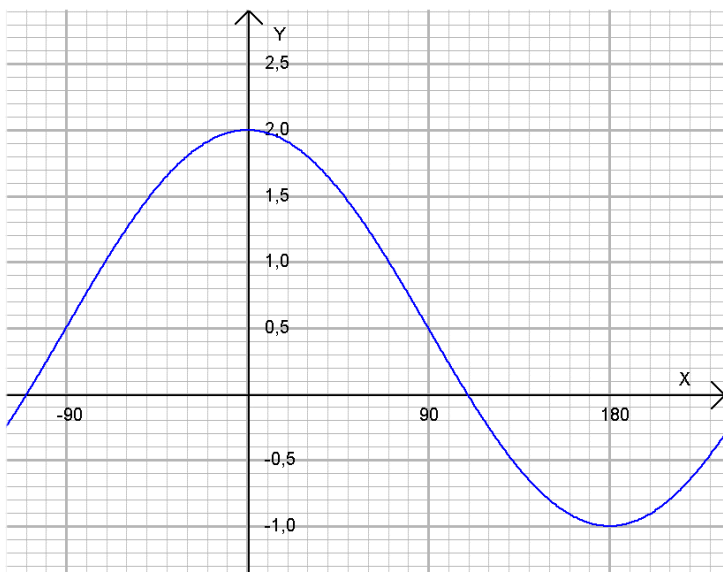
1. Ta fram funktionsuttrycken som ger graferna nedan.



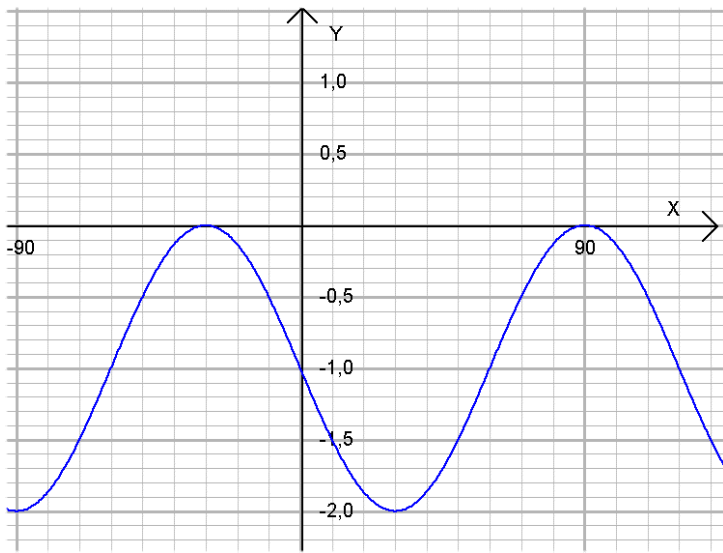
a)



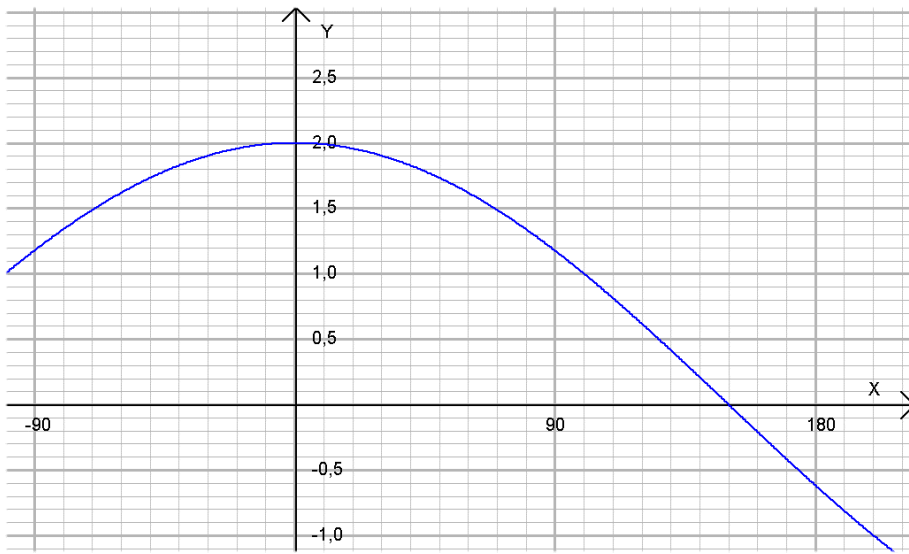
b)



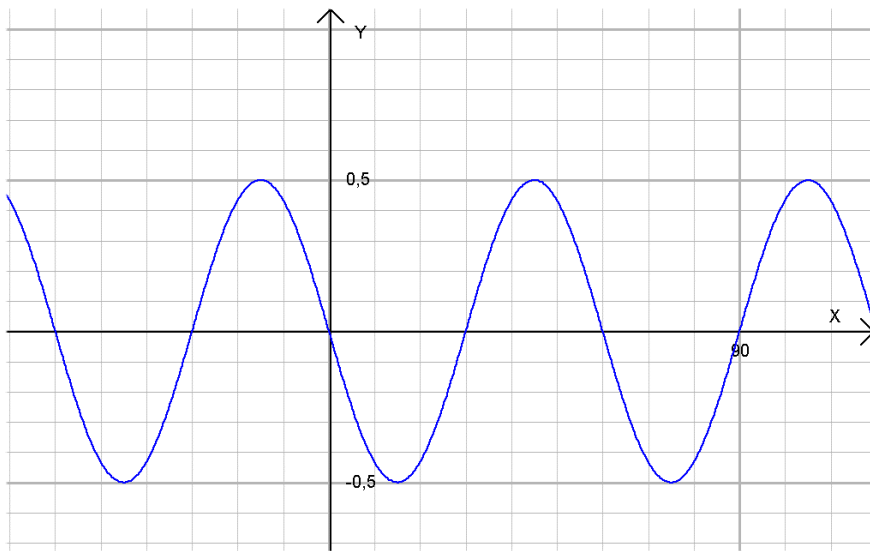
c)



d)

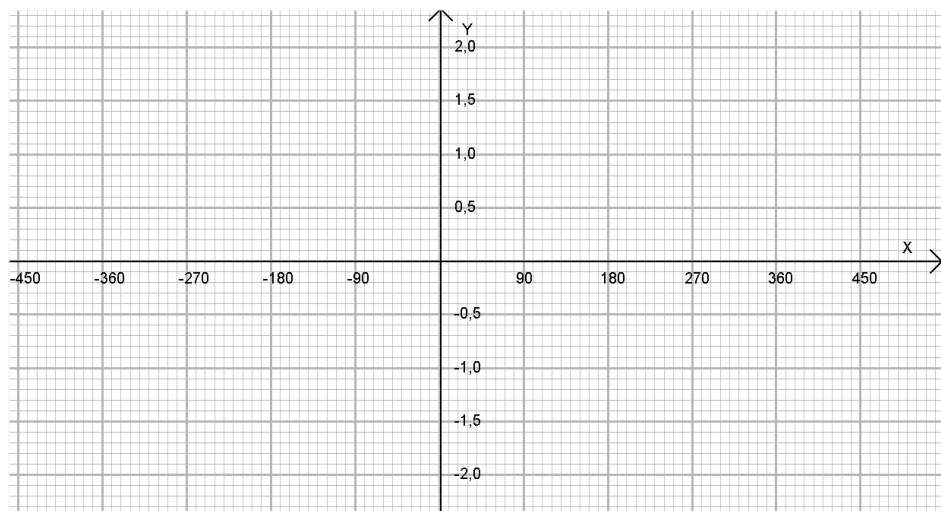


e)



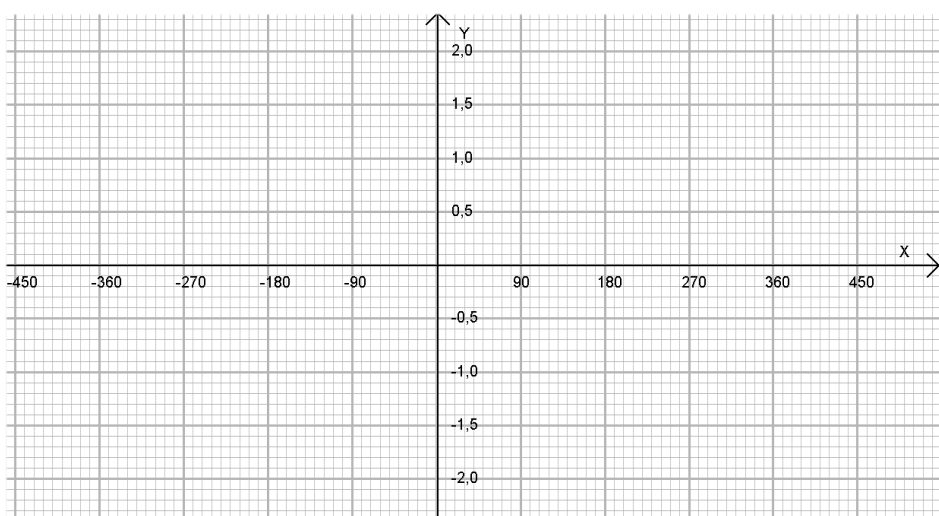
f)

2. Rita graferna till funktionerna i koordinatsystemen nedan.



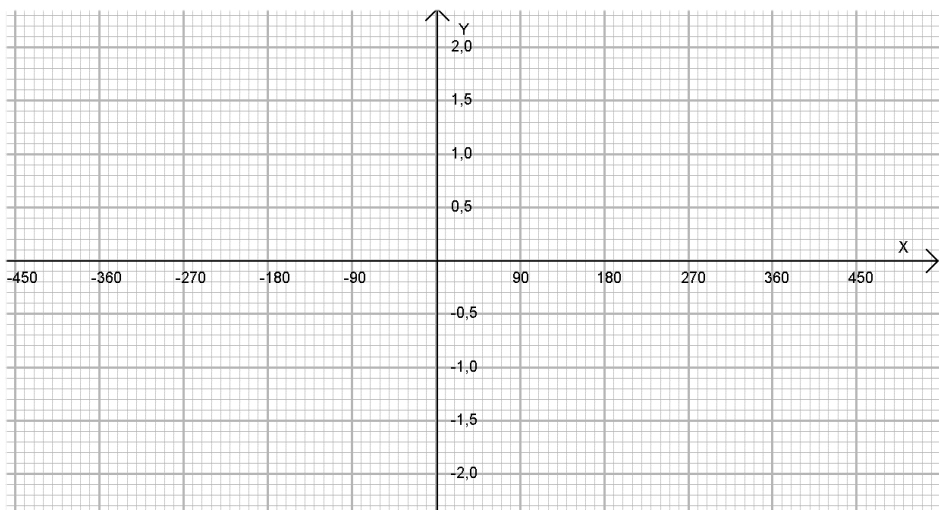
$$f(x) = 2\sin(x)$$

a)



$$f(x) = -\cos(x) + 0.5$$

b)



$$f(x) = 2\sin(2x)$$

c)